

The world's true measure of color

HunterLab

ColorFlex[®] EZ Citrus



measure
color
the way your
eye sees it



The ColorFlex® EZ Citrus

Like all members of the ColorFlex® EZ family of products, the ColorFlex® EZ Citrus is specifically built to meet and exceed your color measurement needs. Every ColorFlex® EZ Citrus comes with 60 years of color quality control experience and innovation by HunterLab,

The world's true measure of color.

Using a **45°/0° geometry**, the easy-to-use ColorFlex® EZ Citrus provides you with the highest level of color quality control. More importantly, it allows you to

measure
color
the way your
eye sees it

The ColorFlex® EZ Citrus is specifically designed to measure the color of fresh and concentrated orange, grapefruit, and lemon juice.

Citrus color scales provided in firmware include:

- Citrus Number
- Citrus Redness
- Citrus Yellowness



Other important color scales, including **Hunter L,a,b** and **CIE L*a*b*** are provided within the firmware, allowing for the capability to use your ColorFlex® EZ Citrus to measure the reflected color of a wide range of non-citrus samples - liquids, semi-solids, powders, and solids.



As with all ColorFlex® EZs,

the ColorFlex® EZ Citrus

offers you more...

- **Simplicity** with one-touch sample measurement
- **Connectivity** with 3 USB 2.0 ports
- **Ruggedness** with a sealed optical design for the industrial environment
- **Versatility** standard with over 250 product set-ups, including a variety of parameters such as:
 - Color Scale, Indices, Illuminant and Observer measurement condition settings
 - Standards values
 - Pass /Fail tolerances
 - Averaging – for more repeatable measurement of non-uniform samples



Inside its optional, custom designed, watertight carrying case will be everything you will need to immediately start measuring citrus color values...

- ColorFlex® EZ Citrus instrument
- Complete set of instruments and diagnostic standards
- Calibrated Orange Juice 4 Standard
- Orange Juice Tube Holder
- Sample Clamp / Port Forward Stand

... all backed up by the finest customer support in the industry.

For more information go to www.hunterlab.com

or contact your local HunterLab representative.



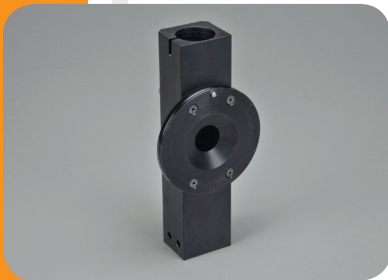
Accessories



A11-1011-510

Orange Juice Standards, Set of 6 (OJ1-OJ6)

Plastic and uncalibrated tubes with positioning screw. It is used for hitching the instrument to USDA's standards



D02-1011-127

Port Insert: Orange Juice Tube Holder

25 mm (1 inch) in diameter orange juice tube holder. It is used to hold sample tubes at the measurement port.



D02-1010-459

Sample Clamp / Port Forward Stand

Securely holds the instrument in a port forward orientation. The sample clamp permits samples to be held flat against the sample port.



A13-1014-294

USB Flexible Keyboard

88 character keyboard allows user to enter IDs directly into ColorFlex® EZ Citrus. Sold separately.

A13-1014-254

USB Barcode Reader

Barcode Scanner scans product IDs directly into ColorFlex® EZ. Automatically detected at USB port. Sold separately.

A13-1014-259

USB Printer

USB printer allows hard copy measurements to be printed. Requires a standard USB cable, sold separately. Uses Thermal Printer paper, sold separately.