

EZMOL options for Color Measurement Data output to LIMs

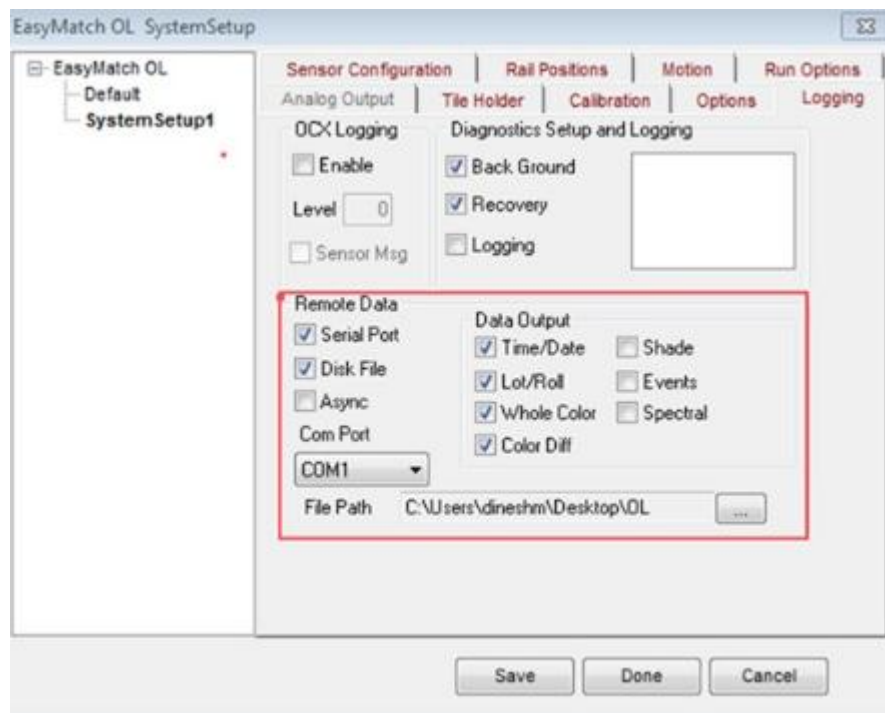
FAQ “I have a new question that I’m hoping you can help me with. We would like to come up with a way to get color data for each coil processed out of EZMOL and into our L2 data system.”

If you are using EasyMatch OL then you can export data to a PC file or out the COM port of the PC to your LIMs L2 data collection system.

STEP-1: In the *System Setup-> Logging* page, In the *Data Output* section, please select the properties to be sent (Time/Date, Lot/Roll etc.).

STEP-2: The *Remote Data* section offers to send the data to COM port or named file.

- a) Check *Serial port* option to send data to a COM port.
- b) Check *Disk File* option to send data to file specified in the *File Path*.



STEP-3: Remote Data output sends data to a COM port or a file, only if *Write to Lot File* option is checked in *Run->Product Setup->EasyMatch OL Productsetup->Page3*.

