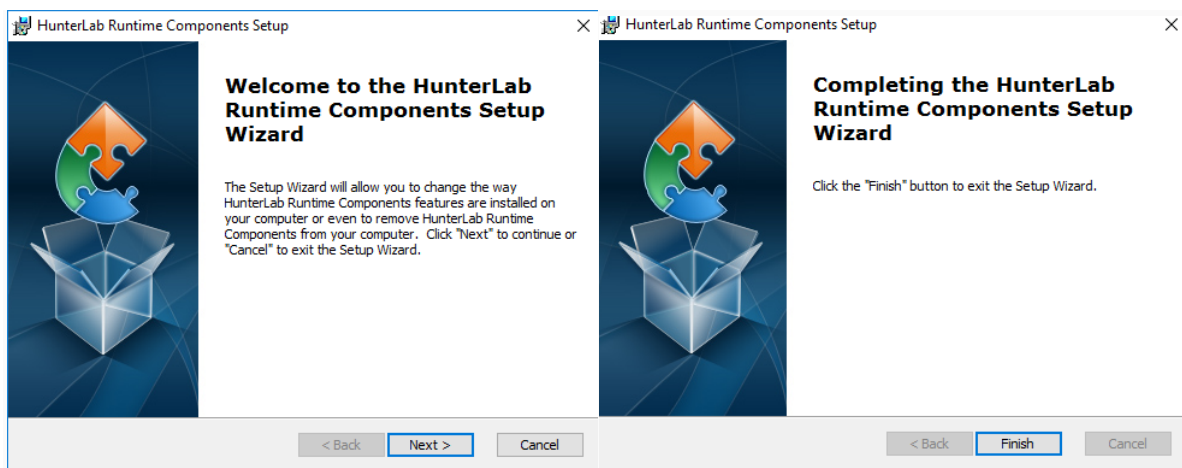
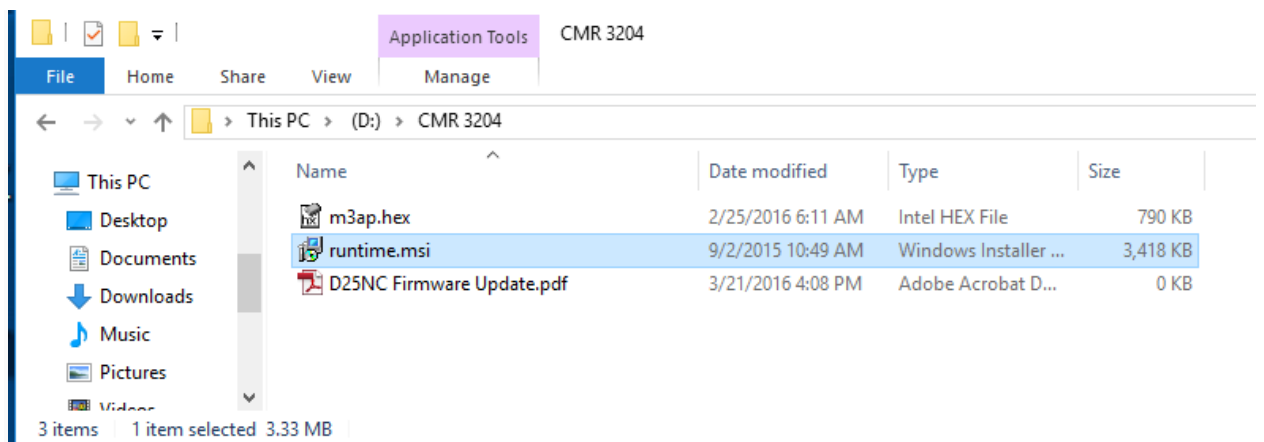


## Updating Firmware on D25NC

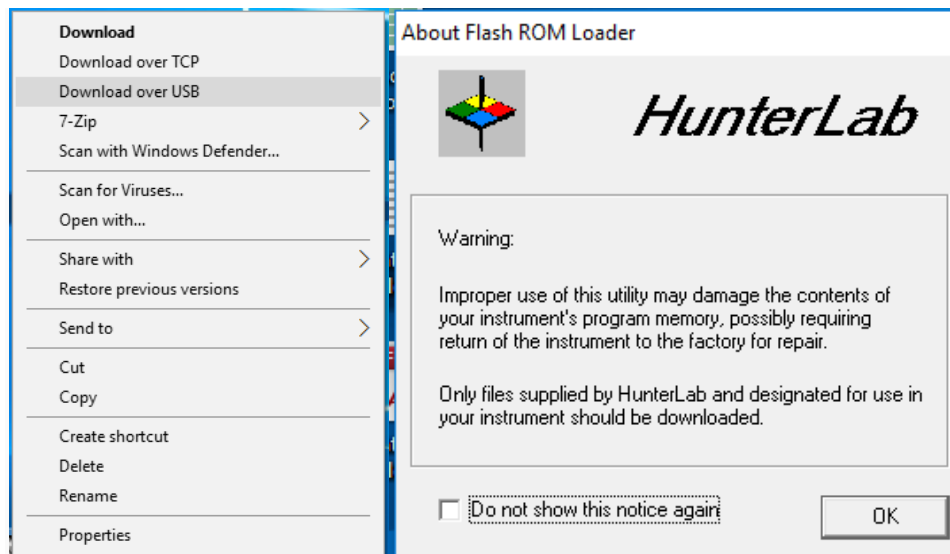
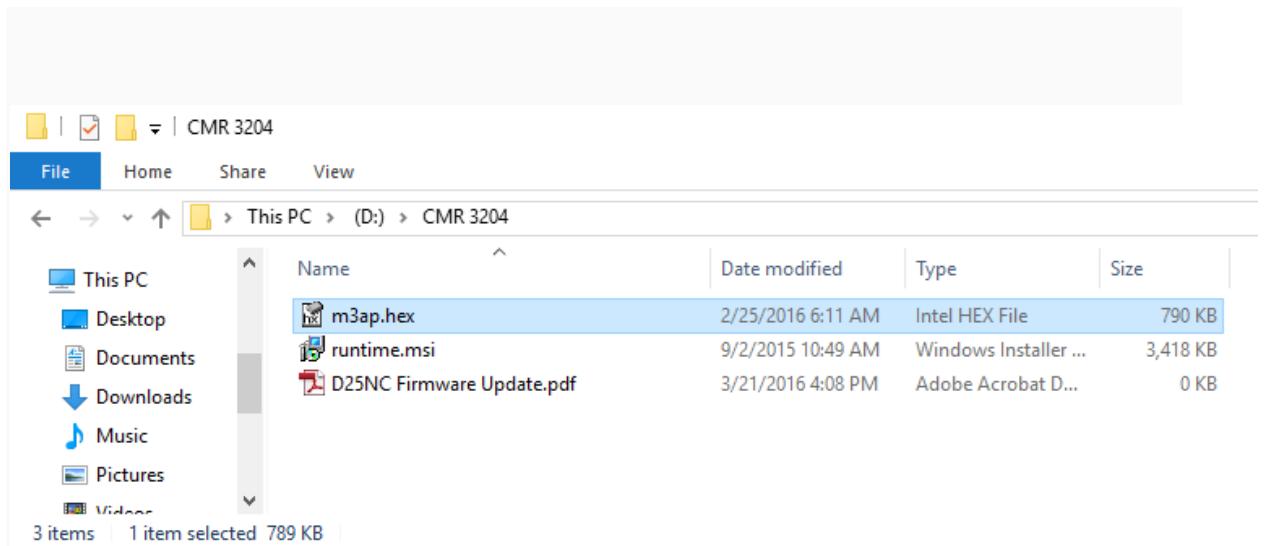
These 3 files are a **firmware update instruction for D25 NC**, a **runtime.msi** file to load needed software components and the **m3ap.hex** to update the firmware.

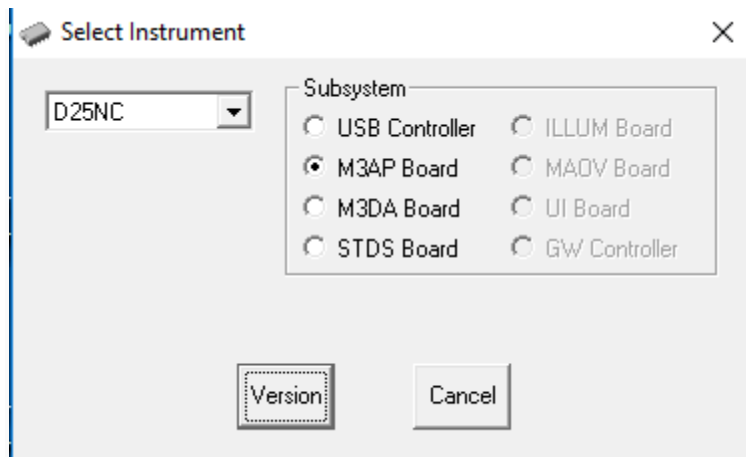
- It is important to note that all customized product setup will be deleted after firmware update. Therefore, you will need to reset those product setup manually or from a backup utility.

1. Install “runtime.msi” by double clicking on runtime.msi and follow the dialog box instructions.  
(You must install with Administrator Privileges)

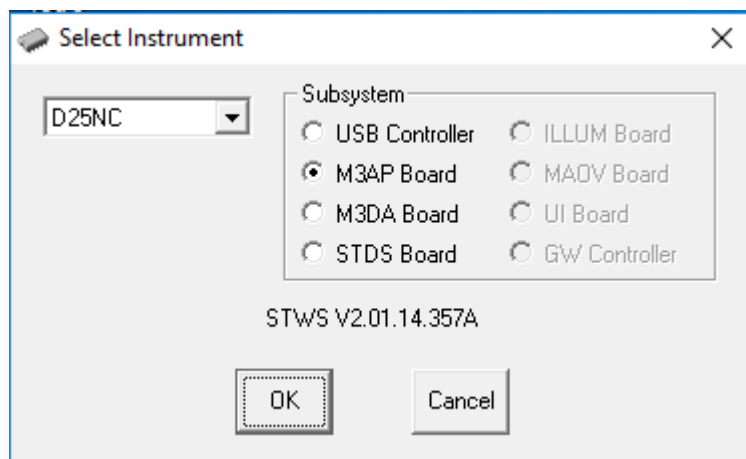


2. Make sure sensor is connected and turned on.
3. **Right** click on the file “m3ap.hex” to bring up the submenu, and then click “Download over USB” to update firmware to D25 NC.

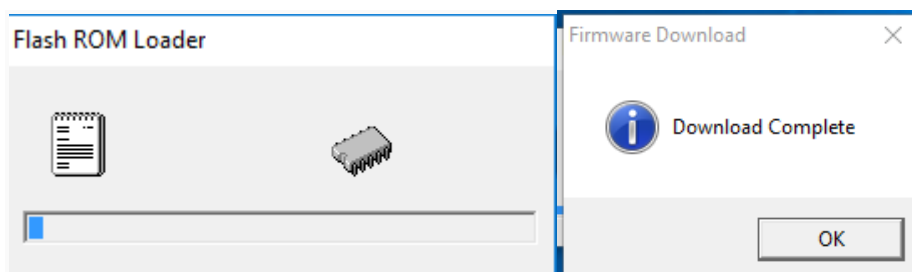




4. Select the "Version" button to display the current firmware on the sensor.



5. Click the "OK" button to begin the download process



6. After firmware update, the sensor will beep and you can begin setup on D25 NC

- Go to “Settings” ----“about”----press left arrow in the instrument to reload “S/N” number.
- Go to “Settings”----“DIAGNOSTICS”----“GREEN TILE CHECK”----type in green tile X Y Z values labeled on the calibration box.
- It is important to note that all customized product setup will be deleted after firmware update. Therefore, you will need to reset those product setups either manually or through the utility backup.